

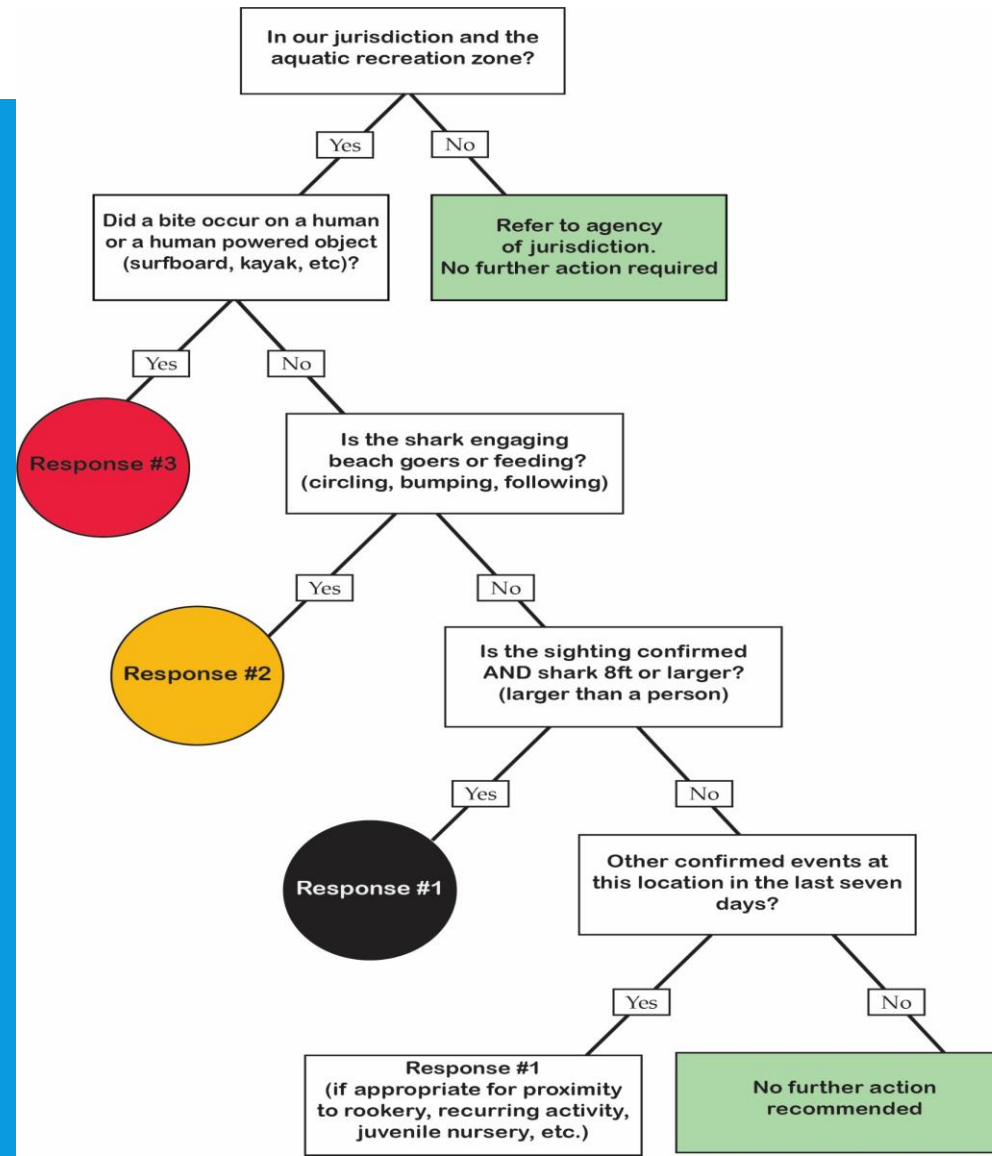
# SHARKS IN CORONADO

FALL 2020 UPDATE

# CITY OF CORONADO SHARK RESPONSE

- Guidelines developed by the Southern California Marine Safety Chiefs Association and the California State University at Long Beach Shark Lab have been developed and adopted by State and local governments up and down the coast.
- The CSULB Shark Lab is also in the process of tagging sharks, deploying receivers, and promoting public education and Lifeguard training programs to help us understand the issue and be prepared to adapt to the new reality.
- The City of Coronado has adopted these shark incident response guidelines and implemented these standardized procedures and signage.
- Shark Lab employees are working with the City of Coronado Lifeguards to deploy receivers and tag sharks off our beach to record data on shark populations and migration patterns.
- The City has also added a Shark Awareness and Education page to its website.

# SHARK INCIDENT DECISION TREE



# SHARK INCIDENT RESPONSE MATRIX

RESPONSE	NOTIFICATION	CLOSURE	DISTANCE	SIGNAGE	MONITORING PERIOD
<b>Response 0</b>	<ul style="list-style-type: none"> <li>Notify Dispatch.</li> <li>Complete and File appropriate reports.</li> </ul>	<b>Not Applicable</b>	<b>Not Applicable</b>	<b>Not Applicable</b>	<b>Not Applicable</b>
<b>Response 1</b>	<ul style="list-style-type: none"> <li>Notify Chain-of-Command/Supervision.</li> <li>Notify CSU, Long Beach Shark Lab.</li> </ul>	<ul style="list-style-type: none"> <li>As directed by your Chain-of-Command/Supervision</li> <li>As required by the circumstances of the call.</li> </ul>	<ul style="list-style-type: none"> <li>As directed by your Chain-of-Command/Supervision.</li> <li>As required by the circumstances of the call.</li> </ul>	<ul style="list-style-type: none"> <li>If posting, signage should be at beach location.</li> <li>Nearest public access (if applicable).</li> <li>As required by the circumstances of the call.</li> </ul>	<ul style="list-style-type: none"> <li>As directed by your Chain-of-Command/Supervision.</li> <li>As required by the circumstances of the call.</li> </ul>
<b>Response 2</b>	<ul style="list-style-type: none"> <li>Notify Chain-of-Command/Supervision.</li> <li>Notify adjacent agencies.</li> <li>Notify CSU, Long Beach Shark Lab.</li> </ul>	<ul style="list-style-type: none"> <li>As directed by your Chain-of-Command/Supervision.</li> <li>As required by the circumstances of the call.</li> </ul>	<ul style="list-style-type: none"> <li>Up to 1-mile, or jurisdictional or physical boundary.</li> <li>Adjacent public access points (if applicable).</li> </ul>	<b>YELLOW ADVISORY SIGNAGE</b>	<ul style="list-style-type: none"> <li>Minimum posting of 24 hours.</li> </ul>
<b>Response 3</b>	<ul style="list-style-type: none"> <li>Notify Chain-of-Command/Supervision.</li> <li>Agency PIO, City Officials.</li> <li>Notify adjacent agencies.</li> <li>Notify CSU, Long Beach Shark Lab.</li> </ul>	<b>YES</b>	<ul style="list-style-type: none"> <li>At location.</li> <li>Up to 1-mile or jurisdictional or physical boundary</li> <li>Adjacent public access points (if applicable)..</li> </ul>	<b>RED CLOSURE SIGNAGE</b>	<ul style="list-style-type: none"> <li>Minimum posting of 48 hours.</li> </ul>

# ADDITIONAL INFORMATION

- Go to [www.Coronado.ca.us](http://www.Coronado.ca.us) and search “Shark Awareness and Information”
- Or go to <https://www.csulb.edu/shark-lab> for more information and videos

▪ ANY QUESTIONS?

# Coronado and Navy Land Use Agreements

---

Naval Complexes Coordinating Group  
November 16, 2020



# License: Silver Strand Ecological Preserve

---



- Functions as a preserve for native flora and fauna
- Popular area for bird watching
- City completed improvements to parking lot in 2003
- City maintains and services the parking lot
- License renewed in 2018, expires in 2023





# License: Glorietta Bay Beach

---



- Beach area in front of the Coronado Clubroom and Boathouse
- Used for public recreation
- License renewed in 2018, expires in 2023





# License: Dog Beach

---



- Approx. 1 acre of beachfront property at Naval Base Coronado
- Used for public recreation
- License expires in 2020, renewal in progress



# Right-of-Entry Permit: Glorietta Bay Park and Coronado Beach

---



- Allows use of the park and beach for Navy military training activities
- Permit renewed in 2020 for 5 years



# Other Issues: Dirt Lot

---



- Area owned by City in front of Amphibious Base
- Preliminary discussions around a “land swap” for beach area in front of the Clubroom and Boathouse





Coronado Police Department

---

# Opening of Right Turn Lane NASNI





## Coronado Police Department

---

- 28 citations and 3 warnings were issued for illegal left turns.
- There were no speeding violations related to drivers coming off base.
- A significant number of drivers that came off base made U-Turns mid block in order to make right turns onto 5<sup>th</sup>, 6<sup>th</sup> and 7<sup>th</sup> Streets.
- Our Communications Center received 1 complaint on November 9<sup>th</sup>, (After our monitoring period) regarding drivers making illegal turns at the intersection of Alameda and 5<sup>th</sup> Street.

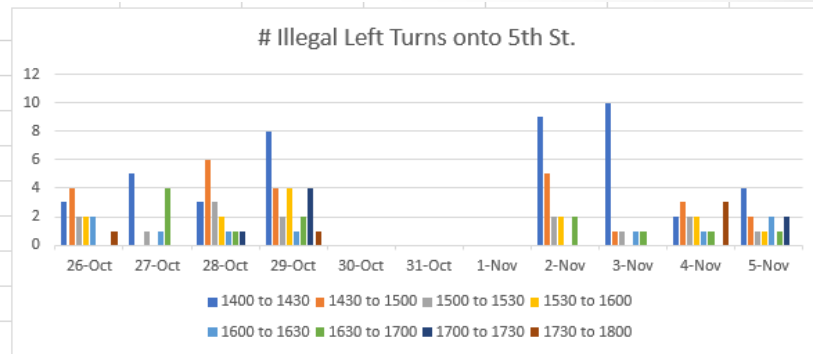


# Coronado Police Department

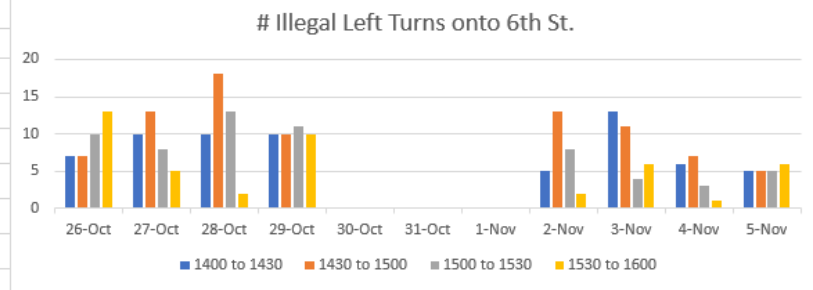
## Breakdown of Violations

### Illegal Left Turns from Alameda onto 5th, 6th and 7th Streets

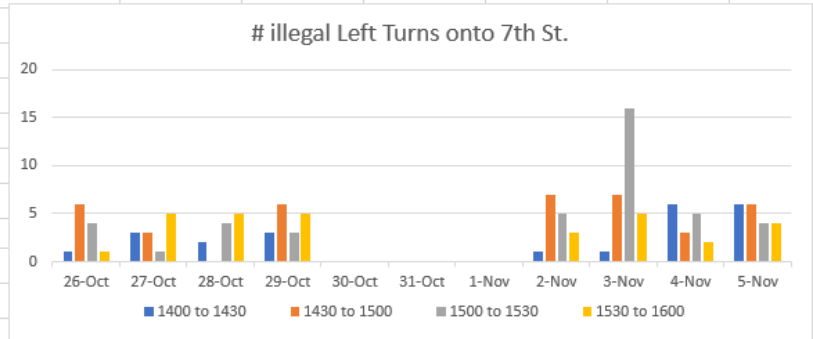
5th & Alameda	26-Oct	27-Oct	28-Oct	29-Oct	2-Nov	3-Nov	4-Nov	5-Nov	Total
1400 to 1430	3	5	3	8	9	10	2	4	44
1430 to 1500	4	0	6	4	5	1	3	2	25
1500 to 1530	2	1	3	2	2	1	2	1	14
1530 to 1600	2	0	2	4	2	0	2	1	13
1600 to 1630	2	1	1	1	0	1	1	2	9
1630 to 1700	0	4	1	2	2	1	1	1	12
1700 to 1730	0	0	1	4	0	0	0	2	7
1730 to 1800	1	0	0	1	0	0	3	0	5
<b>Total</b>	<b>14</b>	<b>11</b>	<b>17</b>	<b>26</b>	<b>20</b>	<b>14</b>	<b>14</b>	<b>13</b>	<b>129</b>



6th & Alameda	26-Oct	27-Oct	28-Oct	29-Oct	2-Nov	3-Nov	4-Nov	5-Nov	Total
1400 to 1430	7	10	10	10	5	13	6	5	66
1430 to 1500	7	13	18	10	13	11	7	5	84
1500 to 1530	10	8	13	11	8	4	3	5	62
1530 to 1600	13	5	2	10	2	6	1	6	45
<b>Total</b>	<b>37</b>	<b>36</b>	<b>43</b>	<b>41</b>	<b>28</b>	<b>34</b>	<b>17</b>	<b>21</b>	<b>257</b>



7th & Alameda	26-Oct	27-Oct	28-Oct	29-Oct	2-Nov	3-Nov	4-Nov	5-Nov	Total
1400 to 1430	1	3	2	3	1	1	6	6	23
1430 to 1500	6	3	0	6	7	7	3	6	38
1500 to 1530	4	1	4	3	5	16	5	4	42
1530 to 1600	1	5	5	5	3	5	2	4	30
<b>Total</b>	<b>12</b>	<b>12</b>	<b>11</b>	<b>17</b>	<b>16</b>	<b>29</b>	<b>16</b>	<b>20</b>	<b>133</b>



Grand Total	26-Oct	27-Oct	28-Oct	29-Oct	2-Nov	3-Nov	4-Nov	5-Nov	Total
<b>Total</b>	<b>63</b>	<b>59</b>	<b>71</b>	<b>84</b>	<b>64</b>	<b>77</b>	<b>47</b>	<b>54</b>	<b>519</b>



# Coronado Police Department

---

# Questions